

# BAG END YOKES

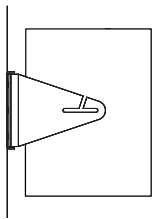
## DESCRIPTION

Our Yokes utilize fixed width mounting arms with open slotted attachment points to allow the loudspeaker to be easily and quickly installed by a single installer. The Bag End Yoke Kit reliably adapts to most any installation environment providing a convenient good looking installation.

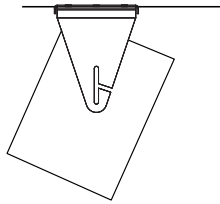
Our mounting hole pattern allows the Yoke to be attached to walls, ceilings, balcony overhangs, trusses, bars, beams, threaded rods and cable assemblies. The loudspeaker may be rotated within the arms of the U-bracket to aim in the desired direction and then locked into that position.

Isolation gaskets are included to isolate sound vibrations from walls, ceilings, and to protect speaker finishes.

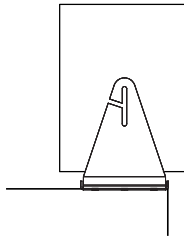
## MOUNTING OPTIONS



Wall Mounted



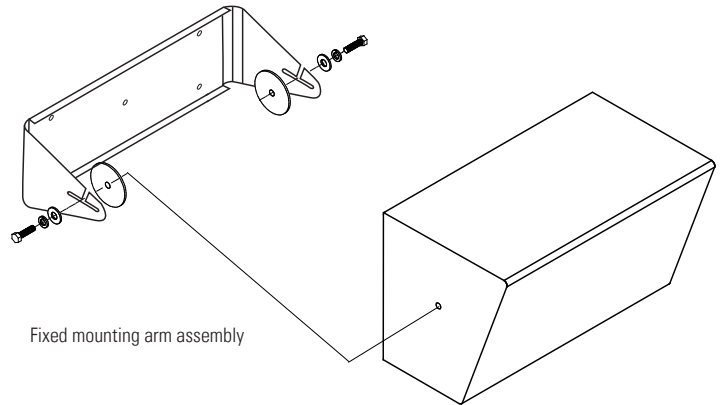
Ceiling Mounted



Deck Mounted



Full Range Loudspeaker with Yoke assembly attached, shown with threaded rod (not included).



Fixed mounting arm assembly

## SPECIFICATIONS

**Material:**  
Alloy steel plate

**Color:**  
Black

**Design Factor:**  
5:1 ratio

**Hardware Kit:**  
Hardware varies by model. It includes 5/16" bolts and rubber spacers for installation.

**Finish:**  
Powder coat paint

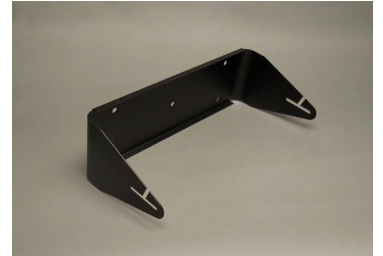
**Working Load:**  
60 lbs. max

BAG END® is a registered trademark of Bag End, Inc.

# BAG END YOKES

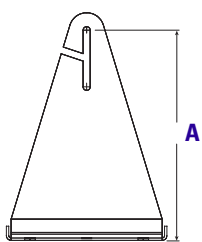
## MODELS AND COMPATIBILITY

Model Number	Compatibility	Depth (A)	Height (B)	Width (C)	D	E
Yoke CD12	CDS-112 OPAL2-I	8.6"	7.5"	25.8"	16"	5"
Yoke CD15	CDS-115	11.1"	8.5"	28.9"	16"	6"
Yoke D10	D10E-I	10"	7.5"	23.3"	16"	5"
Yoke D12	D12E-I	11.1"	8.5"	28.9"	16"	6"
Yoke TA5	TA5002-I	11.1"	8.5"	28.9"	16"	6"
Yoke TA6I	TA6002-I	10"	7.5"	23.3"	16"	5"
Yoke TA6S	TA6002-S	10"	7.5"	23.3"	16"	5"

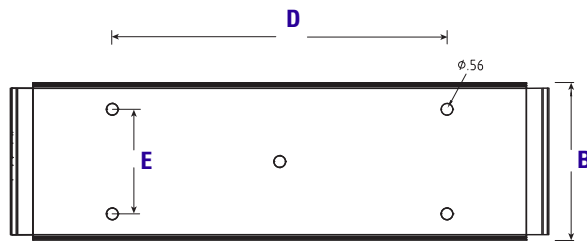


## DIMENSIONS

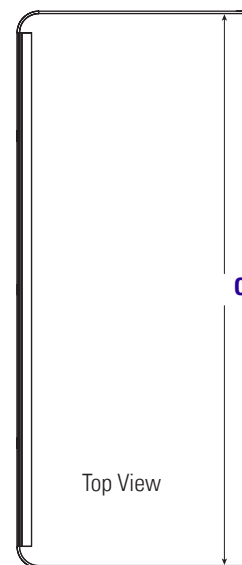
Shown: Yoke CD-15



Side View



Front View



Top View